

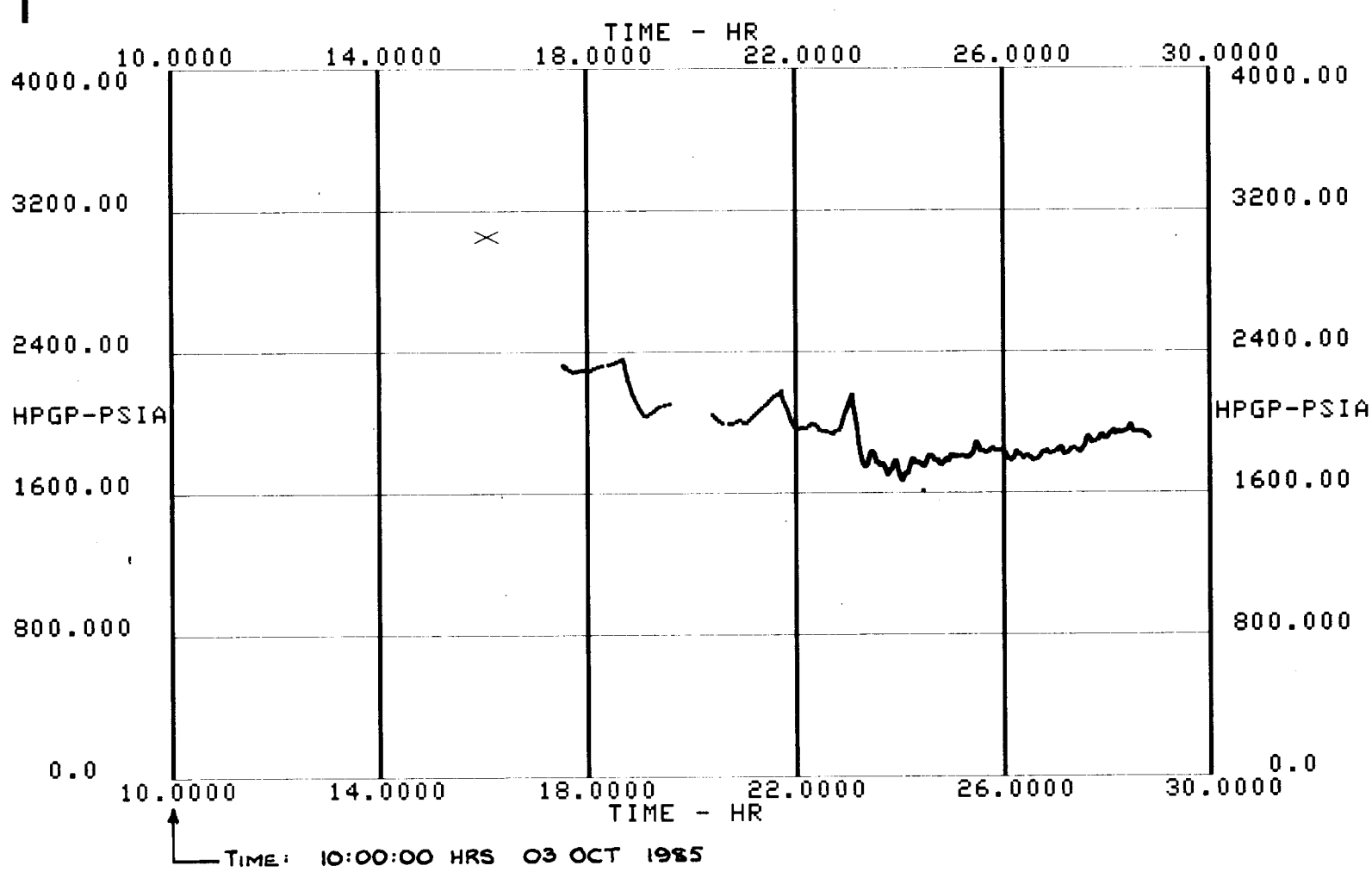
Schlumberger

WELL FLOWING

CSU Field Log

DEPTH HMS-B GAUGE 1316.3 m.

FILE 3 04-OCT-85 04:51



Schlumberger

WELL FLOWING

CSU Field Log

Schlumberger

CLEAN UP

CSU Field Log

## PARAMETERS

NAME	VALUE	UNIT
BS	12.2500	IN
SGSN	0000A-00	
BHT	212.000	DEGF
PCTS	TEMP	
NTHR	-10.0000	F/MN
HPD	0.0	
VPCF	.830000	

NAME	VALUE	UNIT
BHS	CASE	
SHT	60.0000	DEGF
TD	3048.00	M
PTHR	10.0000	F/MN
LPD	0.0	
TIRA	.500000	

## SENSOR MEASURE POINT TO TOOL ZERO

DTEM	6.9	METER
TEMP	6.9	METER
SPIN	.2	METER
CVEL	.3	METER
EXT	0.0	METER
EXP2	0.0	METER
GRHD	5.1	METER

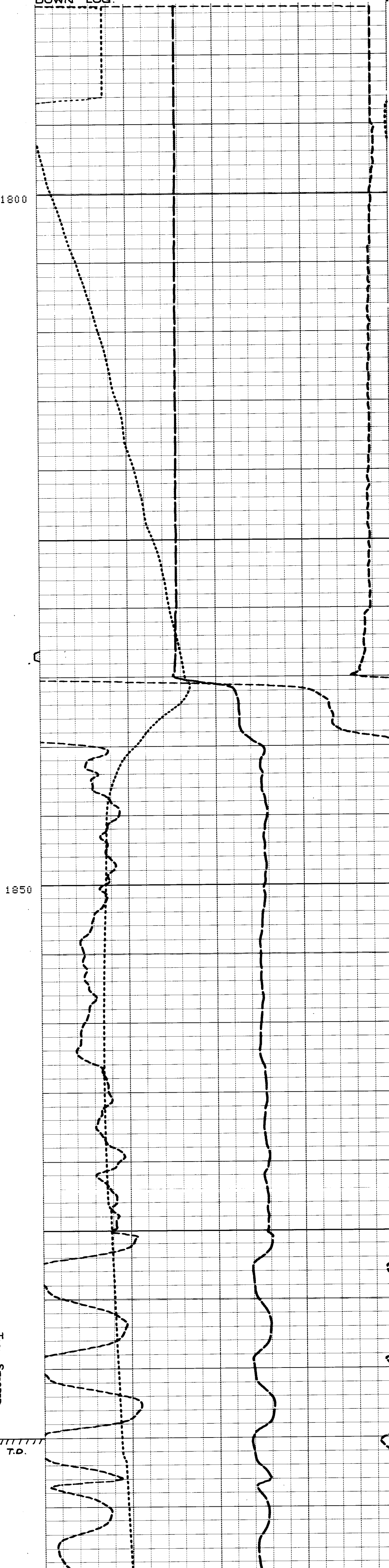
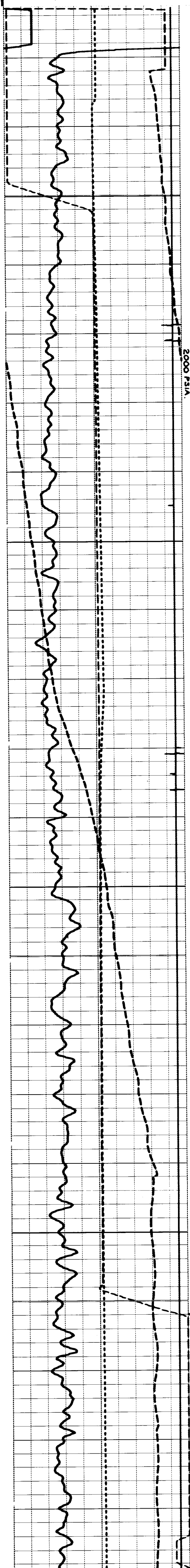
MP	6.7	METER
HPF	9.1	METER
CCL	13.4	METER
TENS	13.4	METER
EXP3	0.0	METER
EXP1	0.0	METER
GR	10.7	METER

0.0	100.00
GR (GAPI)	
0.0	100.00
CVEL(F/MN)	
-19.00	1.0000
CCL	
1900.0	2000.0
HPGP(PSIG)	
150.00	250.00
TEMP(DEGF)	

0.0	10.000
TEMP(DEGF)	
0.0	2.0000
GRHD(G/CM)	
0.0	.40000
GRHD(G/CM)	

FILE 3 03-OCT-85 19:53

## DOWN LOG



FILE 3 03-OCT-85 20:02

0.0	100.00
GR (GAPI)	
0.0	100.00
CVEL(F/MN)	
-19.00	1.0000
CCL	
2000.0	2100.0
HPGP(PSIG)	
150.00	250.00
TEMP(DEGF)	

0.0	10.000
TEMP(DEGF)	
0.0	2.0000
GRHD(G/CM)	
0.0	.40000
GRHD(G/CM)	